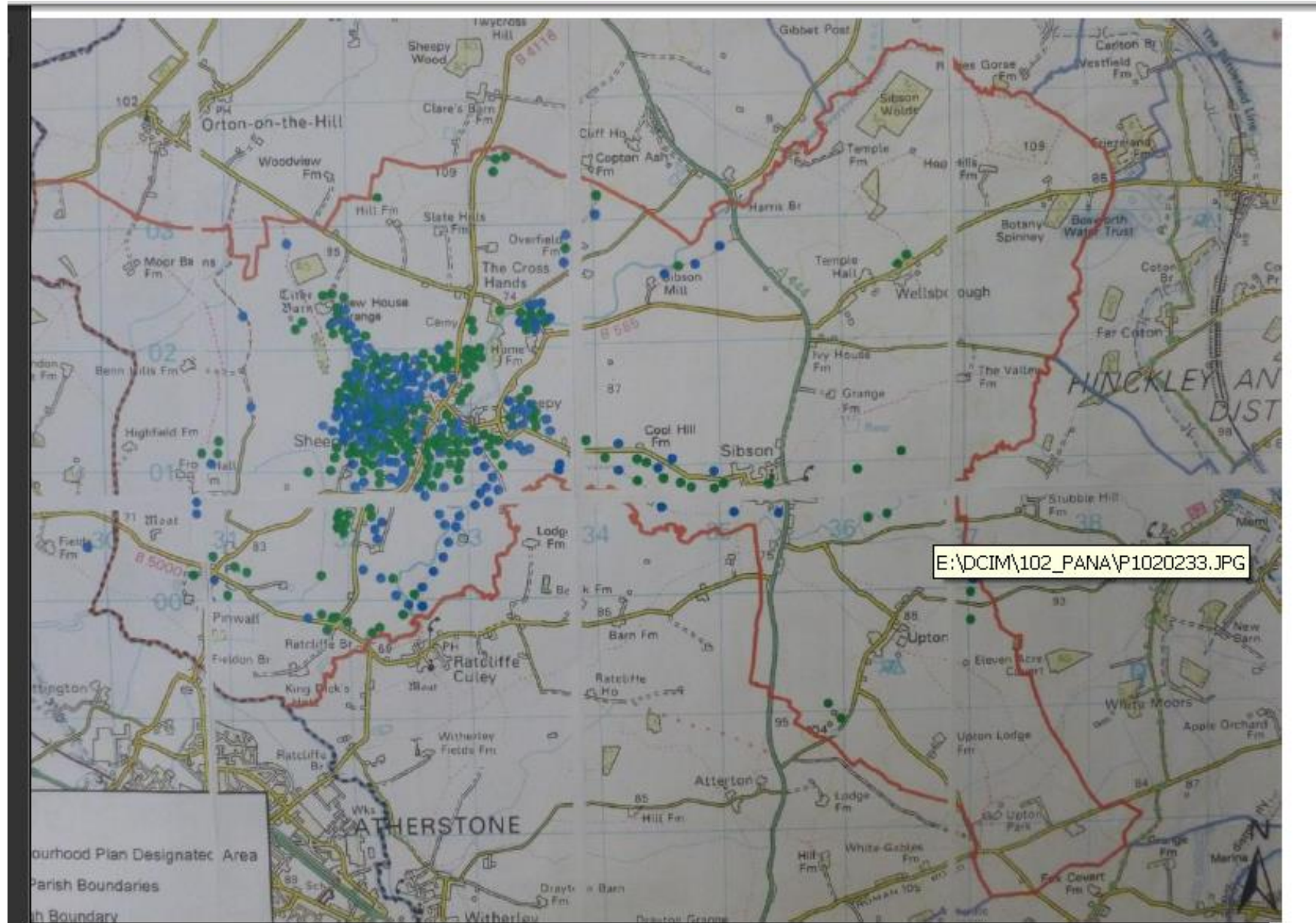


Rural Characteristics (views and open spaces)

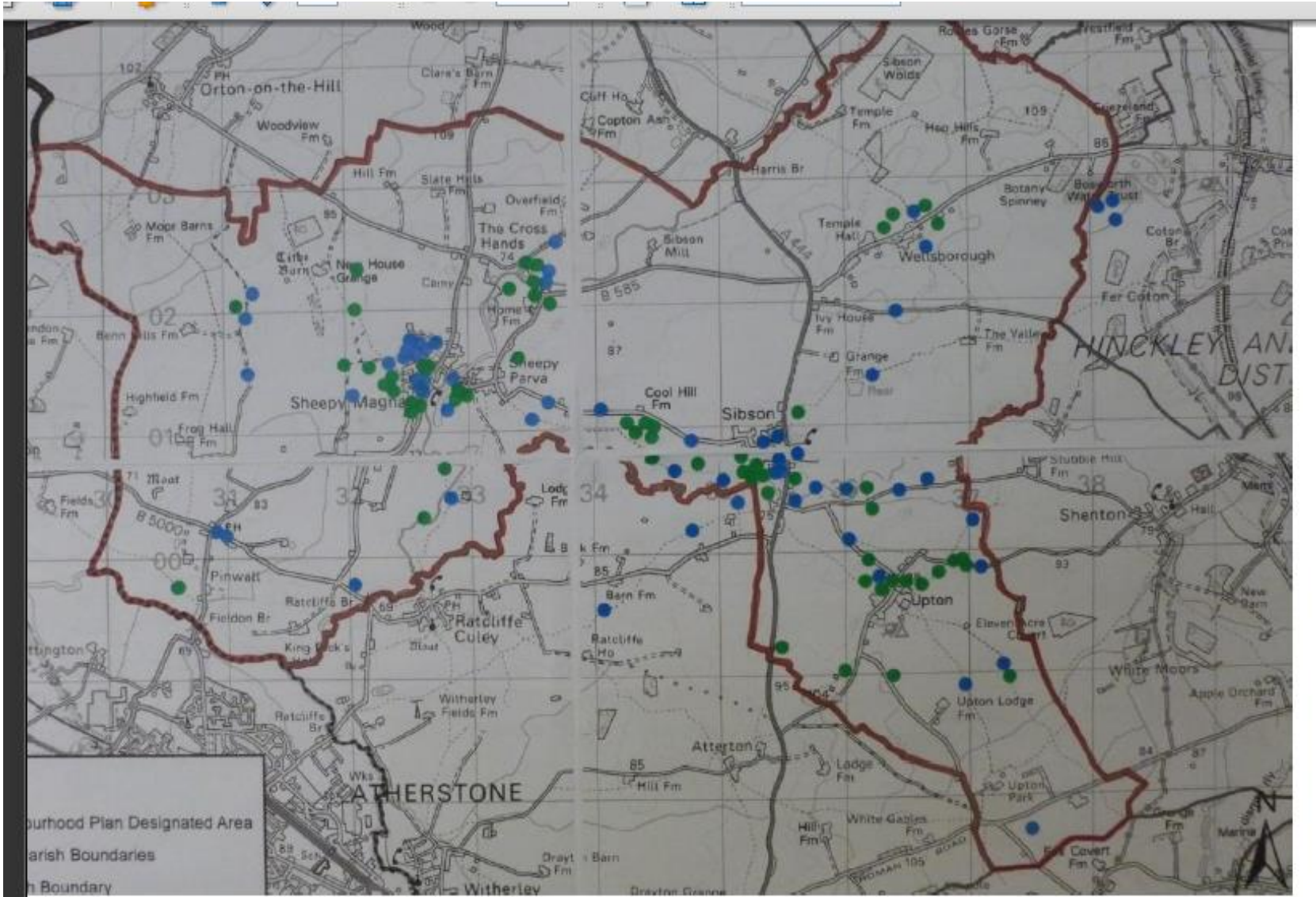
Questionnaire RCC Report - Q64 (5.4.1) Which of these views do you feel are important to the Parish?

View	Yes
Mill Lake	510 (84.4%)
Road & footpath between Sheepy Parva and Sibson	486 (82.9%)
Glade and Playing Fields	503 (82.5%)
Field adjacent to the end of Meadow Close & Oakfield Way	462 (76.4%)
Trout Pond Lakes	446 (73.2%)
Lovett's Bridge	402 (68.7%)
Field to the rear of Sheepy Memorial Hall	387 (64.9%)
Fields adjacent to crossroads	358 (62.7%)
Road to Shenton	353 (61.3%)
New House Grange	355 (60.6%)
Fields to the rear of Long Row Cottages	341 (59.0%)
Road and Footpath to Shenton	323 (56.9%)
Back of Sheepy Lodge/Dormer House	335 (56.7%)
View from Temple Hall	319 (56.0%)
The back of Holly Tree Cottage	322 (54.5%)



Distribution of Dots - Sheepy Magna Event: Blue: 279 Green: 315

Drop In Event – January 2016– Sibson–RCC Report - Identified important Views – Green Dots



Distribution of Dots - Sibson Event:

Blue: 60 Green: 64

Other Comments from the Questionnaire

Q65 (5.4.2) Are there any other views & open spaces that you feel are important? 50

- Many people indicated that they chose to live in Sheepy/Sibson because of the views
- The view from meadow close past 15 - 19 and the chestnut tree to the church should be protected - as already requested at the consultation
- Map3 view area 2 - the other side of the boat but public footpath's signs need to be available & clearly marked and maintained
- Open spaces around Orton Lane + Orton on the hill
- Open spaces around Orton Lane and Orton on the Hill
- Sibson - Sheepy lane
- No i think development of homes is more important to justify further services such as bus services, cycle path, play park, youth club and a shop
- Ratcliffe lane - fields and ponds around elms farm. Lots of birds and wildlife. Map 2 south of area 5 and the poplars is flood plain also fields opposite pub is floodplain fields and the river by the bridge Ratcliffe lane
- The loveliest view in Sheepy is along 19-15 meadow close to the church in winter. It needs to be protected as a priority
- Access to mill lake now unavailable to villages losing walks + views of important wildlife
- Field in front of white cottages in Wellsborough
- Water meadows along River Sence throughout parish
- View from manor farm / manor farm cottages - Wellsborough
- Would be nice to see more houses in the estate but not to use too much of the fields
- Footpath from watery lane towards Twycross
- Footpath from watery lane - Twycross
- Sheepy Parva - mill lake - this is essential to sheepys image
- Public footpaths signs need to be available clearly marked and maintained 6
- / between 1&4 fields to rear of Meadowsides 'moat' - land between t6 & t12
- New house grange - trout pond lakes - keep all these views
- The meadow between ByronLodge and Glebe Lane, known as Mayfield, on the A444 at Sibson has a public footpath and should be kept as open space meadow
- Views and footpaths north and south of elms farmhouse, Sheepy
- We enjoy the view along meadow close/vom 19-15 of the lovely chestnut trees
- 1-views of Sheepy lake from its western edge - please see 2.1 comment [map 2/view area 4] 2-map 3 as circled in biro 3- map 4 as circled 4- map 5 as circled 5-map 6 as circled 6-map 8 as circled all views from everywhere should be protected but not to the detriment of small business development, sympathetic housing or considerate energy production.
- Again residents views are not considered as three of views are no longer available due to houses being built
- All open spaces are in my opinion important

- Map 2: all south of areas 4&5!!! All north of area 9. Map 4: east of Twycross rd map 5: all south of area 13
- The space in front of 15-19 meadow close should be protected
- Maintaining views is vital to the character of the parish fields to rear and front of white houses, Sibson from Wellsborough rd at its junction with the a444 the approach to Sibson from Sheepy the approach to Sibson from fenny along a444
- Land around poplars farm, adjacent to main road and rectory lane.
- Open fields opposite wheelwright place
- Fields on approach to village from both ends
- Land around poplars farm adjacent to main road and Ratcliffe Lane
- Open field opposite wheelwright place field by sharp bend into village of Sheepy from Atherstone
- Fields adjacent to the road from Sheepy to Sibson
- Field opposite black horse in Sheepy Magna. Fields opposite main road Sheepy Magna