



**Supporting People &  
Sustaining Communities**

**SHEEPY PARISH  
NEIGHBOURHOOD PLAN**

**STAKEHOLDER CONSULTATION WORKSHOP**

Thursday 3<sup>rd</sup> March 2016

**Results**

# Contents

1) Introduction.....	2
2) Workshop Overview .....	2
3) Workshop Invitee List .....	2
4) Workshop Delegate List .....	3
Table 1: Stakeholder Meeting Delegate List & Groupings:.....	3
5) Issues and Priorities Group Discussions - Results .....	4
Table 2: Issues & Priorities – Traffic and Transport: .....	4
Table 3: Issues & Priorities – Public Rights of Way:.....	5
Table 4: Issues & Priorities – Local Economy:.....	5
Table 5: Issues & Priorities – Housing:.....	6
Table 6: Issues & Priorities – History and Heritage: .....	7
Table 7: Issues & Priorities – Green Spaces and Environment: .....	8
Table 8: Issues & Priorities – Facilities and Services: .....	8
Table 9: Issues & Priorities – Energy and Water:.....	9
Table 10: Issues & Priorities – Communications: .....	10
APPENDIX 1 – Workshop Presentations.....	11
APPENDIX 2 – Stakeholder Consultee List.....	13

## 1) Introduction

The Neighbourhood Plan process will provide residents, businesses, service providers and local organisations with a unique opportunity to help guide development within the designated area, plan the future delivery of local services and facilities, and ensure that Sheepy Parish remains a vibrant and sustainable place to live, work, and do business.

To support the successful development of the Sheepy Parish Neighbourhood Plan, the RCC was commissioned by the Sheepy Parish Neighbourhood Plan Committee to organise and independently facilitate a consultation workshop of key local stakeholders which was held on 3<sup>rd</sup> March 2016 in Sheepy Magna Church of England Primary School, Sheepy Magna

## 2) Workshop Overview

The workshop was held with the following aims:

- To provide project stakeholders with some background and context to the Sheepy Neighbourhood Plan.
- To ensure local stakeholders understand the process and your role in helping to shape the Neighbourhood Plan.
- To provide stakeholders with an opportunity to feed in the issues and priorities you consider it important to include / explore further within the Neighbourhood Planning process.
- To make stakeholders aware of future opportunities to engage in the plan making process.
- To contribute to the core evidence base and inform the ongoing consultation and engagement process required to produce the Sheepy Neighbourhood Plan

Delivery of the workshop was divided into two parts:

### **A. Presentations providing the context and background to the project (copies of all presentation slides are provided at Appendix 1):**

- Overview of Neighbourhood Planning - *RCC*  
*The background, the process, and steps to be taken.*
- Role and support for communities in Neighbourhood Planning – *HBBC*  
*The duty to support, provision of advice, responsibility and practical steps.*
- The Consultation Process and Aims of Stakeholder Meeting - *RCC*  
*Introduction to the Issues and Priorities Discussion Session.*

### **B. Group based issues and priorities discussion session.**

## 3) Workshop Invitee List

Working with the Sheepy Parish Neighbourhood Plan Committee, the RCC has developed a comprehensive list of stakeholder contacts for consultation and engagement throughout the process of developing the Neighbourhood Plan (including all statutory consultees).

A comprehensive list of all stakeholders identified for consultation is provided at Appendix 2.

## 4) Workshop Delegate List

Table 1 lists the delegates in attendance at the stakeholder workshop held on 3<sup>rd</sup> March 2016.

**Table 1: Stakeholder Meeting Delegate List & Groupings:**

Name	Organisation
Ms. Gemma Dennis	Hinckley & Bosworth Borough Council
Ms. Sarinah Farooq	Hinckley & Bosworth Borough Council
Ms. Angela Forsyth	Witherley Parish Council
Ms. Kate Gardiner	Sheepy Parish NP Group
Ms. Joanna Garland	Garlands Leisure Ltd - Mythe Farm Ltd - Mythe Barn Ltd
Mr. Joseph Garland	Garlands Leisure Ltd - Mythe Farm Ltd - Mythe Barn Ltd
Mrs. Jane Harris	No 7 Bus Partnership
Ms. Susan Houghton	All Saints Church
Ms. Andrea Johnson	Sheepy Parish NP Group
Mrs C Ward Lewis	Sheepy Magna Church of England Primary School
Mr. Neal	Landowner
Mrs. Neal	Landowner
Mr. Peter O'Hare	Make it Special Events
Mrs. Jo Winfield-O'Hare	Make it Special Events
Cllr Ivan Ould	Leicestershire County Council
Mr. Stephen Parkinson	New Hall Farm
Mr. Chris Parson	Leicestershire Fire & Rescues Service
Mr. M Percival	Sheepy Local History Society
Mrs. L Percival	Sheepy Local History Society
Mr. Geoff Platts	Environment Agency
Ms. Deborah Poole	Sheepy Parish NP Group
Mr. John Pope	Market Bosworth Neighbourhood Forum
Mr. Alan Smith	Landowner
Mrs. Trish Smith	Landowner
Mr. Clive Stretton	Sheepy Parish NP Group
Mr. Peter Terry	Pinwall Grange Farm
Mr. John Ward	Sheepy Parish NP Group
Anne Parkinson	Sheepy Parish NP Group
Vivien Braithwate	
Keith M	Hinckley & Bosworth Borough Council
Andrew Cormack	Farmer
Charlie Blood	Farmer
Pete Blood	Farmer
Ashley Davis	Farmer
Allister Woodward	Farmer
C Peat	Carlton Parish Council
H J Woods	Pinwall Hall
Barbara Clinton	Sheepy Scouts – Sheepy Melody Makers
Jim Aldridge	Sheepy Parish Council

## 5) Issues and Priorities Group Discussions - Results

Facilitated discussion took place within four groups. Each group looked at the key issues and opportunities for consideration within the Sheepy Parish Neighbourhood Plan area under a series of 9 headings; *Traffic & Transport, Public Rights of Way, Local Economy, Housing, History & Heritage, Green/Open Spaces & Environment, Facilities & Services, Energy & Water, and Communications.*

Tables 2 -10 detail the key discussion points recorded under each heading by each of the 4 groups.

**Table 2: Issues & Priorities – Traffic and Transport:**

Traffic and Transport	
Group 1	
1.	School traffic – problem
2.	B4116 speeding traffic – problem
3.	Cattle Crossing needed
4.	Aldi/TNT HGV traffic – quite a lot: a problem
5.	Rat Run: Twycross to A5
Group 2	
1.	Speeding – dealt with by County Council
2.	Heavy traffic – monitored by Parish Council
3.	School parking problem – Mill Lane
4.	Parking suggested on lay-by
5.	As school evolves look at parking
6.	No 7 Bus – sustainable bus service
7.	Connecting villages/Atherstone
8.	Insufficient parking at Village Hall
Group 3	
1.	Number 7 Bus service developed
2.	Speeding – P.C VAS to collect
3.	Flood warden to control flooded pond
4.	Flooding not an issue at present
Group 4	
1.	Pinwall Speed limit lower than 40mph (stick to 40mph)
2.	Crossroads dangerous - Ratcliffe going across
3.	HGV's through Sheepy recent accident crashed into barriers – concern
4.	Major highway infrastructure may need changes
5.	Sustainability of a Bus Service & other infrastructure
6.	Cycling – some children bike to school
7.	May encourage children to cycle if it was safer
8.	Bus – No 7: 3 years to reduce the subsidy, need people to use the facility, greater publicity of the service and times
9.	Bus stops: sustainable for workers (timings now suitable, promote with young)

**Table 3: Issues & Priorities – Public Rights of Way:**

<b>Public Rights of Way</b>
<b>Group 1</b>
<ol style="list-style-type: none"> <li>1. Inappropriate use</li> <li>2. Dog Fouling</li> <li>3. Signage improvements</li> <li>4. Restriction in use of fated roads after dark – wrong people are using them</li> </ol>
<b>Group 2</b>
<ol style="list-style-type: none"> <li>1. Footpaths – some not readily accessible</li> <li>2. 4 x 4 major problem day and night</li> <li>3. Maintain existing footpaths/garlands</li> </ol>
<b>Group 3</b>
<ol style="list-style-type: none"> <li>1. Public rights of way</li> <li>2. New gates required (requested by farmer)</li> <li>3. Footpaths need maintaining by some farmers</li> <li>4. Heritage town</li> <li>5. Land owners – no need for paths</li> </ol>
<b>Group 4</b>
<ol style="list-style-type: none"> <li>1. Pinwall – Bridge over rivers</li> <li>2. Bad condition</li> <li>3. Leading to Ratcliffe Grounds</li> <li>4. Legally who is accountable?</li> <li>5. Footpath overgrown need to be cut more regularly</li> <li>6. Footpath information on notice board sites</li> <li>7. Borough promotes cycling in Borough – encourages cycling. Greater publicity of linking routes</li> <li>8. Attractive circulate routes, kissing gates are more suitable for people</li> <li>9. Dogs encourage people to use the routes</li> <li>10. Link footpaths from Bosworth &amp; Battlefield into Parish</li> <li>11. Upton plans</li> <li>12. Market Bosworth school getting out and about</li> <li>13. Handed out free goods</li> </ol>

**Table 4: Issues & Priorities – Local Economy:**

<b>Local Economy</b>
<b>Group 1</b>
<ol style="list-style-type: none"> <li>1. Local shops / Post office</li> <li>2. Police presence at edge of boundary (Leicestershire / Warwickshire)</li> <li>3. Pub – maintain</li> <li>4. No heart to the community</li> </ol>

<b>Group 2</b>
<ol style="list-style-type: none"> <li>1. More internet/local businesses in village at present</li> <li>2. Support farm diversification to maintain rural area</li> <li>3. Shop – we need one &amp; the pub</li> <li>4. Central facility required</li> <li>5. Potential increase in tourism from Richard III</li> </ol>
<b>Group 3</b>
<ol style="list-style-type: none"> <li>1. More B&amp;B in area</li> <li>2. Zoo extension</li> <li>3. Bosworth tourism</li> <li>4. What can we encourage business with</li> <li>5. Neighbourhood Plan should be positive towards local businesses</li> <li>6. Support and maintain existing micro business</li> <li>7. Memorial Hall to be used as a business hub</li> <li>8. To develop car parking spaces for businesses</li> </ol>
<b>Group 4</b>
<ol style="list-style-type: none"> <li>1. What are the small businesses in the area? Need to promote.</li> <li>2. Are starter units/medium units required?</li> <li>3. Broadband issues - £10K cost to school. Struggle with Wi-Fi / mobile phone signal</li> <li>4. Speed too slow</li> </ol>

**Table 5: Issues & Priorities – Housing:**

<b>Housing</b>
<b>Group 1</b>
<ol style="list-style-type: none"> <li>1. “Affordable housing” – local connection criteria</li> <li>2. Smaller houses</li> <li>3. Sensitive to the local environment</li> <li>4. Efficient low carbon</li> <li>5. 3 bedroom estate (back of Black Horse)</li> </ol>
<b>Group 2</b>
<ol style="list-style-type: none"> <li>1. New build – fire service encourage smoke detection</li> <li>2. Sprinklers</li> <li>3. Development – too many new big houses at present</li> <li>4. Encourage mix of new housing – relevant to existing architecture</li> <li>5. Not necessarily infill – have site/sites on edge of village</li> <li>6. Consider not cutting down trees in new developments</li> </ol>
<b>Group 3</b>
<ol style="list-style-type: none"> <li>1. Not to expand onto designated green land/area</li> <li>2. Identify character areas</li> <li>3. Small housing for young family/elderly</li> </ol>

4. Windmill site developments
5. Develop other areas as well as Sheepy Magna
<b>Group 4</b>
1. 46% of children in catchment would be good as reduce transport into village and more for locals
2. Like small school
3. Housing good for the school
4. Housing – only part of parish at moment. Is this right? No real opinion
5. 24 houses near ponds: mixture of size important
6. Sustainability vs. affordability?

**Table 6: Issues & Priorities – History and Heritage:**

<b>History and Heritage</b>
<b>Group 1</b>
1. Heritage asset list required
<b>Group 2</b>
1. Church – support Church in involving community activities
2. Heritage list – already been done of important
3. Story boards – e.g. on footpaths
<b>Group 3</b>
1. Valued the rural area
2. Building of interest identified
3. These buildings can be used as a template for farm development
4. Shop replacement houses in keeping with the village
5. Criteria that developers must adhere to
6. MB identified character areas
<b>Group 4</b>
1. Protect heritage
2. New development shows compliment and reflect heritage
3. Building materials and setting
4. Historic interest: need to record and protect
5. Solar panels should be in keeping
6. Computer games company: collaboration with business to support Broadband
7. What are farmer's plans?
8. Recreational facilities linked to tourism
9. The Barn – Knights Templar, Battlefield – link tourism



**Table 7: Issues & Priorities – Green Spaces and Environment:**

<b>Green Spaces and Environment</b>
<b>Group 1</b>
<ol style="list-style-type: none"> <li>1. Litter and fly tipping</li> <li>2. Football pitches / play areas, Sheepy lake – valued areas</li> <li>3. Flooding issues – rivers clogged</li> </ol>
<b>Group 2</b>
<ol style="list-style-type: none"> <li>1. Scout tree planting such a good idea at playing field but not maintained</li> <li>2. Flooding – need sustainable solution ongoing</li> <li>3. Less birds since increase in developments – decline in swans etc.</li> </ol>
<b>Group 3</b>
<ol style="list-style-type: none"> <li>1. Important to maintain green spaces</li> <li>2. Make use of Brownfield site</li> <li>3. Development of cycle path</li> <li>4. Trade?</li> </ol>
<b>Group 4</b>
<ol style="list-style-type: none"> <li>1. The Glade – seating area would be liked?</li> <li>2. Visual aspects important: need to identify views in the area: important to pick this up</li> </ol>

**Table 8: Issues & Priorities – Facilities and Services:**

<b>Facilities and Services</b>
<b>Group 1</b>
<ol style="list-style-type: none"> <li>1. Police (Leics/Works border)</li> <li>2. Schools – sustainable?</li> <li>3. Street lights</li> <li>4. Bus service (route 7)?</li> <li>5. Mains water pressure to be improved</li> <li>6. Mains Gas</li> <li>7. Hi Speed Broadband: Upton/Sibson/Sheepy (part of)</li> </ol>
<b>Group 2</b>
<ol style="list-style-type: none"> <li>1. Village Hall 200 years old – is heavily used but limited in how can improve – do we require new one. High maintenance – cannot clean easily</li> <li>2. Is New Hall possible?</li> <li>3. Fire service – increase community awareness in village regarding five fatalities</li> <li>4. Fire services to be consistent regardless of county boundary</li> </ol>
<b>Group 3</b>
<ol style="list-style-type: none"> <li>1. Scout/Brownies meet at Sibson village hall</li> <li>2. Shop – community shop</li> <li>3. Memorial hall – too small for concerts?</li> <li>4. Outdoor gym</li> </ol>

5. New site on playing fields for village hall
6. Large village hall or increase the use of the Churches
7. Check out possible options on redevelopment of memorial hall
8. Insurance claim made on the fire of Pavilion...

#### **Group 4**

1. Services:
  - Post office – promote locations, more facilities
  - Link to others would help viability
  - Near of football team
  - School like facilities
  - Area well used
  - Safe area for children away from road
  - Village hall and sports facility shared use
2. Shop:
  - Bins well used: could get someone to take
  - Is it commercially viable
  - People like online]
  - Look at satellite from farm shop at Grendon
3. Village Hall:
  - Wrong location on the bend and small location: could it be relocated?
  - Could school be used for community use? 7.45 to 8.45 limited time available to use.
4. School:
  - Nursery attached
  - All around care provided: no preschool in Parish

**Table 9: Issues & Priorities – Energy and Water:**

<b>Energy and Water</b>	
<b>Group 1</b>	
1. Avoid development on flood plain	
2. Foul drainage – some not on mains	
3. Improve water quality (run-off etc.)	
4. Each village to have own wind turbine/solar arrays	
5. Maintenance of water line/renewal – breaks/leaks – 2 x per year	
<b>Group 2</b>	
1. No new overhead services	
2. Solar panels or wind turbines?	
3. Use of water for electricity?	
4. Are existing drains adequate for new housing	
<b>Group 3</b>	
1. New infrastructure needed	
2. No plans for turbines	
3. River turbines?	

4. No fall site by the farm 5. Waterwheel 6. Wind turbine on 25 year life span 7. Solar panels
<b>Group 4</b>
1. Not one big issue 2. Linking facility 3. Balance – nature & protection 4. Different needs 5. Regular drainage important 6. Water management balance: nature & protection 7. Wet woodland held 8. Wildlife and protect from flood line 9. Solar panels – prefer solar panel to wind farm

**Table 10: Issues & Priorities – Communications:**

<b>Communications</b>
<b>Group 1</b>
1. Hi speed broadband for all 2. Mobile phone reception – no mast near school
<b>Group 2</b>
1. Broadband needed to improve 2. Community building 3. Maintain rural nature of Parish/Wildlife areas
<b>Group 3</b>
1. A need for businesses 2. Mobile – still poor in some areas
<b>Group 4</b>
1. Improved publicity: <ul style="list-style-type: none"> <li>- Footpaths</li> <li>- Bus times</li> <li>- Local services and business</li> </ul> 2. Mobile phone signal needs improving 3. Wi-Fi 4. Broadband speed poor improve for business & school

# APPENDIX 1 – Workshop Presentations

 Supporting People & Sustaining Communities

## Sheepy Parish Neighbourhood Plan Stakeholder Meeting

### Welcome

1 ★

## Welcome & Introductions

Cllr Andrea Johnson, Chair  
Sheepy Parish  
Neighbourhood Plan Steering Group

2 ★

**SHEEPY PARISH COUNCIL**  
THE VILLAGES OF  
Sheepy Magna, Sheepy Parva, Sheepy, Wollaton, Upton, Pottall and Coss Hand



3 ★

## Welcome



4 ★

## Tell us what you think



5 ★

## AGENDA

1. Welcome
2. Overview of Neighbourhood Planning
3. Role and Support for Communities
4. Issues and opportunities workshop

6 ★

## Overview of Neighbourhood Planning

- What can and cannot be achieved
- Neighbourhood Planning process
- Neighbourhood Planning Leics/UK

7 ★

## Neighbourhood Planning

- Has statutory weight through the Localism Act.
- Sets planning policies for development and use of land.
- Led by Parish/Town Council or Neighbourhood Forum.
- Involves, but not led by the Local Planning Authority.
- Requires community consultation, an independent examination and a local referendum.

8 ★

## What a Neighbourhood Plan could look at

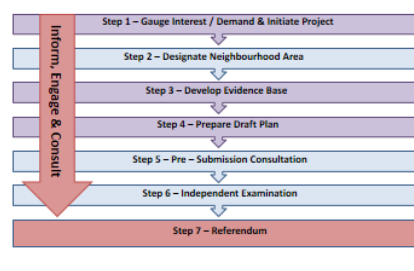
- The development of housing (location, type, tenure etc)
- The design and layout of new buildings
- Local employment sites and opportunities for business
- Transport and infrastructure
- Local facilities and services
- The protection and creation of open spaces
- Environmental issues
- Installation of renewable or alternative energy solutions.
- Protection of important buildings and historic assets

9 ★

CAN	CANNOT
Shape & direct future development.	Prevent any development from ever taking place in an area.
Identify most suitable local sites.	Block a specific development.
Have statutory weight.	Conflict with local, national, or EU policies.
Encourage more development.	Reduce allocated development.
Identify key areas for protection.	Be prepared with no input or support from the local community.
Set required improvements or additions to facilities, services and infrastructure.	Be prepared without the support of the Parish / Town Council or Local Planning Authority.

10 ★

## Steps to Create a Neighbourhood Plan



11 ★

## Neighbourhood Planning Leicestershire

**North West Leicestershire District:**  
Ashby De La Zouch Ellistown & Battleflat

**Harborough District:**  
Scraptoft, Lubenham, East Langton, Broughton Astley, Billesdon  
Kibworth Beauchamp & Kibworth Harcourt Foxton Great Glen North Kilworth  
Burton Overy Great Easton Medbourne Shearsby Swinford Tur Langton  
Hungarton Houghton on the Hill Great Bowden

**Hinckley & Bosworth Borough:**  
Market Bosworth, Burbage West Clarendon Hinckley Desford Sheepy

12 ★

## Neighbourhood Planning Leicestershire

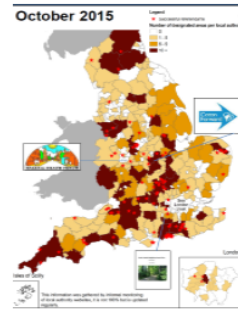
**Charnwood Borough:**  
Barrow Upon Soar Thurstaston & Cropston The Wolds Rearsby Rothley

**Melton Borough:**  
Asfordby Waltham on the Wolds Bottesford Wymondham & Edmondthorpe  
Hoby, Rotherby, Brooksby and Ragdale Croxton Kerial and Branston Somerby  
Nether Broughton & Old Dalby Clawson Hose & Harby Ab Kettleby  
Burton & Dalby Frisby on the Wreake

**Blaby District:**  
Fosse Villages Blaby

13 ★

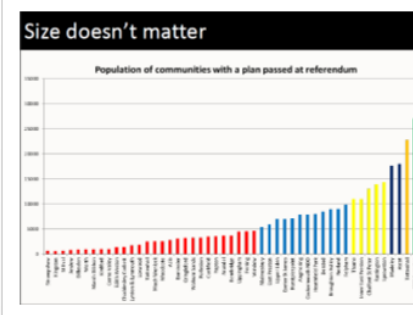
October 2015



14 ★

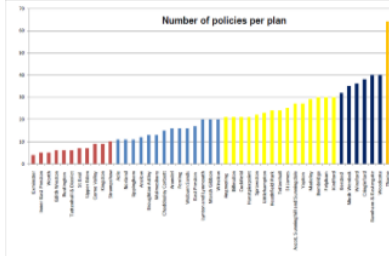
## Size doesn't matter

Population of communities with a plan passed at referendum



15 ★

## Size doesn't matter



16



## Neighbourhood Planning and the Role of the Borough Council

Gemma Dennis  
Planning Policy Officer  
Hinckley and Bosworth Borough Council

17

## The Statutory Role of the Borough Council

- Production of the Local Plan
  - Core Strategy (2009)
  - Hinckley Town Centre AAP (2011)
  - Earl Shilton and Barwell AAP (2014)
  - Site Allocations and Development Management Policies DPD (2016?)



18

## The Statutory Role of the Borough Council

- Designation of a Neighbourhood Area



Current Parish Boundary

19

## The Statutory Role of the Borough Council

- Designation of a Neighbourhood Forum
  - 21 members who live, work or conduct business in the area



20

## The Statutory Role of the Borough Council

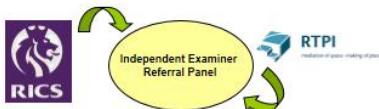
- Ensuring consultation and publicity of plan stages
- Ensure Statutory Consultees are informed of the Pre-examination Plan
- Ensure compliance with EU Regulations
  - ✓ Environmental Assessments
  - ✓ Sustainability Appraisal
  - ✓ Habitat Regulations



21

## The Statutory Role of the Borough Council

- Validation Check
- Appointment of Examiner



22

## The Statutory Role of the Borough Council

- Conducting the Referendum
- 'Making' the Plan



23

## Additional Support from HBBC

- Planning Officer time and support
- Service Level Agreement
- Access to evidence bases
- Attendance at relevant meetings
- Advice on Policy preparation
- Assisting with consultation events
- Statutory Checking Role



24

## How Will HBBC Use the NDP?

Once Made the Borough Council will use NDPs to.....

- Determine planning applications
- Guide developer enquiries
- Resist inappropriate development



25

## Questions?



26

## Publicity & Evidence Base

### STEP 1 – Initial Project Publicity

Plan publicised to the community including flyers, and website

### STEP 2 - Evidence Base

All existing information relating to each parish collated to form a profile of the designated area

### STEP 3 - Public Drop-in Event

To inform the community about the aims and objectives of the plan, and to outline opportunities to get involved. Gain initial comments, likes/dislikes/improvements

27

## Consultation

### STEP 4 - Stakeholder Meeting

Meeting will be held to inform and consult key stakeholders including local councils, service providers, businesses and community groups

### STEP 5 – Parish Survey

Questionnaire for all households within the designated area to gather their views and priorities

### STEP 6 – Public Drop-in Event

Continuing to engage residents, feeding back developing issues and priorities relating to the planning and development of the area

28

## Consultation

### STEP 7 – Children & Young People Engagement

Planning for Real - Questionnaire – Voting Hand Sets

### STEP 8 – Production of Plan

Information, evidence and data collected used to produce plan document

29

## Workshop

To consider the key Issues & Opportunities  
Sheepy Parish Neighbourhood Plan will need to address

30

## APPENDIX 2 – Stakeholder Consultee List

Statutory Consultation Bodies
Hinckley & Bosworth Borough Council
DCLG
Leicestershire County Council
Atherstone Town Council
Witherley Parish Council
Market Bosworth Parish Council
Higham on the hill parish council
Sutton Cheney Parish Council
Twycross Parish Council
Shackerstone Parish Council
Carlton Parish Council
Sheepy Parish Councillors
Homes and Communities Agency
North Warwickshire Borough Council
Natural England
LLEP
The Environment Agency
CPRE Leicestershire
Historic England
The Coal Authority
Network Rail
Health & Safety Executive
Highways Agency
APT Marconi
British Telecommunications PLC
Dolphin Communications Ltd
Hutchinson 3G UK Ltd
Mercury Personal Communications Ltd
Three
National Communications Ltd
One2One Personal Communications
EE Corporate and Financial Affairs Dept.
T Mobile UK Ltd
Telecom Securicor Cellular Radio Ltd
Vodafone and 02
No 7 Bus Partnership
Roberts Coaches N07 Bus
West Leicestershire CCG
Atherstone Surgery
Bosworth Dental Practice
Midlands Rural Housing
National Grid
British Gas Properties
British Gas Connections Ltd
Severn Trent Water
St Philips Centre

Leicestershire Ethnic Minority Partnership
Federation of Small Businesses
Country Land & Business Association
National Farmers Union
East Midlands Chamber
Vista Blind
Action Deafness
Leicestershire Centre for Integrated Living
Mosaic
Mencap
Age UK Leicestershire & Rutland
Interfaith Forum for Leicestershire
Voluntary Action LeicesterShire
Leicestershire and Rutland Wildlife Trust
Sport England
Leicester-Shire & Rutland Sport
Police & Crime Commissioner for Leicestershire
East Midlands Ambulance Service
Federation of Gypsy Liaison Group
Leicestershire Fire & Rescue
Leicestershire Police

Local Businesses
Sheepy Magna C of E Primary School
Dixie Grammar Junior & Nursery School
Team Vicar
One Man went to Mow
Garlands Leisure
T Harding - Electrical Services
The Black Horse
The Cock Inn
Smiths Garage
The Millers Hotel
Country Flowers
Jamie Edwards - Painer & Decorator
Bunney's Household Help
Vision Interiors
Pinwall Feeds
Grapevine
Magnamosaic Ltd
Sheepy Lodge Ltd (B&B)
Sheepy Farm Services
Sheepy Glass Design
Elmsdale House (B&B)
Elm Farm Cattery
Thomas Ray Ltd (Building Maintaiance)
Drovers Way Catering Ltd
Time4Green Ltd

Simply-moveme.com
Lynda Papwoth (Hypnotherapist)
Global Products Ltd
San Giovanni Restaurant Ltd
Exact Vendind Services
K P Carpentry & Joinery
Focus Air Charter
John Hobson Ltd
Nick Drew Design
HLA Management
H Farmer (Welder)
Reultio Ltd
Sibson Mill Properties Ltd
Caton Recycling
Charisma Catering
Leicestershire Hand Made Cheese Co
Fenn Lane Motor Sport
Lifelong Steel Sheds Ltd
Upton Barn Restaurant
Viscard
Acorn Safes
Pink Plant Hire
Holly Lodge Boading Cattery
HF & GR Mumford
Make it Special events
Mythe Barn Weddings
Jilly Beans schoolwear
Mayo Plumbing & Heating Services
Howard Farmer Welding Services
Nicholls Design & Construction
MG Evans Undertakers
The Co-op Funeralcare
The Co-op Funeralcare
Tamworth Co-op Society Funeral Services
The Heart of England Co-op Funeral Care
SEP Electrical & Plumbing Ltd

Community Organisations / Local Clubs	
History Society	
Sheepy WI and WI Choral Social	
Scouts, Guides, Brownies, Cubs	
Zumba	
Ladies Group	
Whist Drive	
Puppy School	
Bingo	
Whist Drive	
Beadelicious	



Ladies That Lunch
Sheepy Friendship Club
Mothers Union
Sheepy Village Sign Society

Landowners
Hill Farm
Hill Farm The Granary
Hill Farm The Mill House
Hill Farm The Old Dairy
New House Grange
Slate Hills Farm
Overfield Farm Dutch Barn
Overfield Farm House
Overfield Farm Meadow View Barn
Payne Barn Overfield Farm
Rye Hills Farm is a house
Rye Hills Cottage
The Barn, Overfield Farm
The Hayloft, Overfield Farm
Moor Barns Farm
Greenhill.
Benn Hills Farm
Frog Hall Farm
The Bungalow Frog Hall
Highfield Farm
Mythe Farm
Pinwall Hall Farm
New Hall Farm
Bay Tree Barn
Elms Farm
Elmsdale
Lodge Farm
Moat Barn Elm Farm
The Hayloft
Greenhill Farms Twycross Ltd
Gresley Farm
Sheepy Fields Farm
Trout Ponds Farm
Cool Hill Farm
Manor Farm House
Home Farm
Home Farm Cottage
Brook House
Glebe Farm
The Bungalow
Poplar Farm

Village Farm Cottage
Village Farmhouse
Bull Pen Manor Farm
Grange Farm
Manor Farm
Wheatfields Manor Farm
Bridge Farm
Dairy House Fenn Lane Farm
Fenn Lane Farm
The Cottage Fenn Lane Farm
2 Manor Farm Cottage
Home Farm
Home Farm Cottage
Manor Cottage
Manor Farm
Sparkenhoe Cottage
Sparkenhoe Farm
Static Caravan Manor Farm
The Bull Pen Manor Farm
Vine House Farm
Upton Lodge Farm
Upton Lodge Farm The Barn
Upton Park
Lucinda Weir
Tim and Richard Thirlby
Peter Clarke
Hill Top Farm
Hoo Hills Farm
Manor Cottage 1
Manor Cottage 2
Manor Farm
Oak Barn Hill Top Farm
Temple Farm
Temple Mill
Ivy House Farm
Valley Cottage
Valley Farm
Sibson Mill
Sibson Mill Farm Cottage
Messrs Neale
Messrs Baxter and Smith
Messrs Smith
Messrs Prentice
Neil Smith
Messrs Trivett
Mr C Wykes
Julie Mercer